

Dawson Program Corrective Sounds Training Course Modules 1 - 5

Training with the Bio Energy Academy of Dublin

Workshops Available to Introduce the Course

Dawson Program Corrective Sound Therapy

"The Dawson Program views the human body as a naturally self-creating, self-correcting system when given the opportunity to do so.

The Dawson Program does not diagnose any specific condition but rather seeks to initiate the return of the body to its optimum condition of wellbeing through the correction of its electrical energy systems. The innate intelligence residing in all humans and animals will undertake the consequent return to health. "Cameron Dawson".

The Dawson Program focuses on treating the root cause of problems, not the symptoms. It is referred to as Vibrational (sound) & Kinesiology (muscle testing).

Life Force Energy

A realignment of the body's energy systems deeply impacts on the life force of the body right through to cellular level. The Dawson Program recognises this "Life Force" as an essential ingredient to the function of the body and sees changes in life force as a direct influence of the behaviour of our genes. Working with the body's life force is a missing link in the western medical model.



How it works:

Every living thing, including our individual cells, is constructed around and surrounded by energy systems of varying frequencies. The correct function of these energy systems enables every cell and organ to maintain the optimum Life Force frequency.

There are 3 primary Energy Systems associated with the human body

7 - Chakras

14 - Meridians

7 - Auric fields

These 28 Energy systems can malfunction due to a variety of causes – Gene faults, birth shock, emotional, chemical, food intolerances or physical shock or trauma. 80% of all illnesses have an emotional cause.

Determine which energy systems are malfunctioning, when they failed and why

This is done using a technique called muscle testing developed by Doctor George Goodheart Jr. DC (Doctor of Chiropractic). The Dawson Program uses a combination of INTENTION plus FREQUENCIES, including Sounds, Affirmations, Scents, Stones, & Cotton Colours to trigger the subconscious to correct the malfunctioning frequency & realign the physical body.

The Practitioner scans the body to find the malfunctioning energy systems, sets the intention & plays the sounds. This completes the correction.



Using only Vibrational Kinesiology, the Dawson Program offers complete safety in all situations. It can be used to help all ages from the as-yet-unborn through to those of advanced age. The techniques can also be applied to farm animals & family pets.

Clients often report improvements with back and joint pain, headaches, learning difficulties, dyslexic symptoms, attention deficit disorder, chronic fatigue, heart conditions, some diabetic conditions, sleeping difficulties, eye & ear problems, depression, thyroid problems, skin conditions, eating disorders and many more.

What you learn in the Dawson Program Training Course Modules 1 - 5

- Introduction & History of the Dawson program
- Dawson Program Precepts & Principles
- Kinesiology, dowsing, muscle testing
- Electrical systems, how they function
- Chakras, Meridians, Auric & Shape fields
- Life Force Energy
- Cameron Dawson Sounds
- Correction, Scanning the body, intention
- Hereditary Gene Faults, tracing/generations
- Geopathic Stress
- Code of ethics for a Practitioner
- Registration and Membership available with the Dawson Program Australia



Lead Educator Details

Helen O'Flinn

Lead Educator of the
Dawson Program

Tel: +353 83 0326127

Email: info@bioenergyacademyofdublin.com

Website: www.bioenergyacademyofdublin.com



Qualifications for Helen O'Flinn

- Bio Energy Diploma
 - Dawson Program Corrective Sounds
 - Emotional Freedom Technique (tapping)
- Theta Healing
 - Mindfulness
- Access Consciousness
 - Cognitive Behaviour Therapy

My Story

I am the Managing Director of the Bio Energy Academy of Dublin. I have worked for many years educating students to qualify as Energy Healing practitioners. I have supported many graduates to set up their own businesses. I have a background in business management and human resource management. I have lived and worked across many countries. I support our students and graduates to utilise their energy healing skills both in-person and remotely with their family, friends and clients. This enables graduates to be accessible globally.

WE ARE ENERGY

Empower yourself with this ancient knowledge
The journey of vibrational health & wellbeing
is one worth taking.

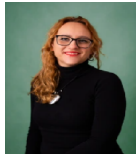
BOOK NOW FOR THIS AMAZING COURSE
MANAGE YOUR & YOUR FUTURE CLIENT'S LIFE.



Assistant Educators

Meet Our Team Of Assistant Educators

Aga Kutajczyk-Talaj
Assistant Educator
of the Dawson Program



Christina O'Riordan
Assistant Educator
of the Dawson Program



Patricia O'Keeffe
Assistant Educator
of the Dawson Program



Dedicated support is provided by our team throughout the course. One:one support and group mentoring are provided to all students by the lead educator and assistant educators.

BOOK NOW FOR THIS AMAZING COURSE
SUPPORT YOU & YOUR FUTURE CLIENT'S WELLBEING



Course Details

Course Location

Our next Dawson Program Corrective Sounds course will take place within live online training classes across five modules from November 2024 to March 2025. Dates of the next course are detailed below. One in-person (non-mandatory) meet-up is offered to students.

Course Dates

This course is part time across 5 Modules:

- Module 1 16/17 November 2024
- Module 2 14/15 December 2024
- Module 3 18/19 January 2025
- Module 4 15/16 February 2025
- Module 5 22/23 March 2025

Course times

Classes take place 10am - 5pm Saturday and Sunday each course weekend.

Class replays

Class replays are provided to all students following each course module. For students who miss some of the course, class replays are available and your tutor will also organise to do a catch-up session with you prior to you completing the next course module to ensure you are comfortable with all course material.

Course Investment

- Early Bird Pay In Full (Discount €200) €3,200
- Full Course Investment Value €3,400
- Payment Plan Option Deposit €200
And 5 Module x payments €640
- For a Personalised Payment Plan Option
Contact Course Tutor @
info@bioenergyacademyofdublin.com

Click [Here](#) to Reserve Your
Course Place.