

# Dawson Program Corrective Sounds Training Course Modules 1 - 4

Training with the Bio Energy Academy of Dublin

## Workshops Available to Introduce the Course

### Dawson Program Corrective Sound Therapy

"The Dawson Program views the human body as a naturally self-creating, self-correcting system when given the opportunity to do so.

The Dawson Program does not diagnose any specific condition but rather seeks to initiate the return of the body to its optimum condition of wellbeing through the correction of its electrical energy systems. The innate intelligence residing in all humans and animals will undertake the consequent return to health. "Cameron Dawson".

The Dawson Program focuses on treating the root cause of problems, not the symptoms. It is referred to as Vibrational (sound) & Kinesiology (muscle testing).

### Life Force Energy

A realignment of the body's energy systems deeply impacts on the life force of the body right through to cellular level. The Dawson Program recognises this "Life Force" as an essential ingredient to the function of the body and sees changes in life force as a direct influence of the behaviour of our genes. Working with the body's life force is a missing link in the western medical model.



# How it works:

Every living thing, including our individual cells, is constructed around and surrounded by energy systems of varying frequencies. The correct function of these energy systems enables every cell and organ to maintain the optimum Life Force frequency.

**There are 3 primary Energy Systems associated with the human body**

7 - Chakras

14 - Meridians

7 - Auric fields

These 28 Energy systems can malfunction due to a variety of causes – Gene faults, birth shock, emotional, chemical, food intolerances or physical shock or trauma. 80% of all illnesses have an emotional cause.

**Determine which energy systems are malfunctioning, when they failed and why**

This is done using a technique called muscle testing developed by Doctor George Goodheart Jr. DC (Doctor of Chiropractic). The Dawson Program uses a combination of INTENTION plus FREQUENCIES, including Sounds, Affirmations, Scents, Stones, & Cotton Colours to trigger the subconscious to correct the malfunctioning frequency & realign the physical body.

The Practitioner scans the body to find the malfunctioning energy systems, sets the intention & plays the sounds. This completes the correction.





# Who & What is the Dawson Program useful for:

Using only Vibrational Kinesiology, the Dawson Program offers complete safety in all situations. It can be used to help all ages from the as-yet-unborn through to those of advanced age. The techniques can also be applied to farm animals & family pets.

Clients often report improvements with back and joint pain, headaches, learning difficulties, dyslexic symptoms, attention deficit disorder, chronic fatigue, heart conditions, some diabetic conditions, sleeping difficulties, eye & ear problems, depression, thyroid problems, skin conditions, eating disorders and many more.

## **What you learn in the Dawson Program Training Course Modules 1 - 4**

- Introduction & History of the Dawson program
- Dawson Program Precepts & Principles
- Kinesiology, dowsing, muscle testing
- Electrical systems, how they function
- Chakras, Meridians, Auric & Shape fields
- Life Force Energy
- Cameron Dawson Sounds
- Correction, Scanning the body, intention
- Hereditary Gene Faults, tracing/generations
- Geopathic Stress
- Code of ethics for a Practitioner
- Registration and Membership available with the Dawson Program Australia



## Lead Educator Details

### Helen O'Flinn

Lead Educator of the  
Dawson Program

**Tel:** +353 83 0326127

**Email:** [info@bioenergyacademyofdublin.com](mailto:info@bioenergyacademyofdublin.com)

**Website:** [www.bioenergyacademyofdublin.com](http://www.bioenergyacademyofdublin.com)



### Qualifications for Helen O'Flinn

- Bio Energy Diploma
  - Dawson Program Corrective Sounds
  - Emotional Freedom Technique (tapping)
- Theta Healing
  - Mindfulness
- Access Consciousness
  - Cognitive Behaviour Therapy

### My Story

I am the Managing Director of the Bio Energy Academy of Dublin. I have worked for many years educating students to qualify as Energy Healing practitioners. I have supported many graduates to set up their own businesses. I have a background in business management and human resource management. I have lived and worked across many countries. I support our students and graduates to utilise their energy healing skills both in-person and remotely with their family, friends and clients. This enables graduates to be accessible globally.

## WE ARE ENERGY

Empower yourself with this ancient knowledge  
The journey of vibrational health & wellbeing  
is one worth taking.

**BOOK NOW FOR THIS AMAZING COURSE**  
**MANAGE YOUR & YOUR FUTURE CLIENT'S LIFE.**

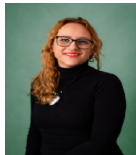




## Assistant Educators

### Meet Our Team Of Assistant Educators

**Aga Kutajczyk-Talaj**  
Assistant Educator  
of the Dawson Program



**Christina O'Riordan**  
Assistant Educator  
of the Dawson Program



**Patricia O'Keeffe**  
Assistant Educator  
of the Dawson Program



Dedicated support is provided by our team throughout the course. One:one support and group mentoring are provided to all students by the lead educator and assistant educators.

**BOOK NOW FOR THIS AMAZING COURSE**  
**MANAGE YOUR & YOUR FUTURE CLIENT'S LIFE.**



## Course Details

### Course Location

Our next Dawson Program Corrective Sounds course will take place within live online training classes across four modules from November 2023 to April 2024. Dates of the next course are detailed below. One in-person (non-mandatory) meet-up is offered to students.

### Course Dates

This course is part time and takes place across 4 Modules:

- Module 1 11/12 November 2023
- Module 2 20/21 January 2024
- Module 3 23/24 March 2024
- Module 4 20/21 April 2024

### Course times

All classes will take place on Saturday 10.00am to 5.00pm and Sunday 10.00am to 5.00pm.

### Class replays

Class replays are provided to all students following each course module. For students who miss some of the course, class replays are available and your tutor will also organise to do a catch-up session with you prior to you completing the next course module to ensure you are comfortable with all course material.

### Course Investment

Full Course Investment Value	€2,600
Early Bird (Pay In Full Discount €200)	
Early Bird Course Investment Value	€2,400
Payment Plan Option Deposit	€200
4 Module x payments	€600

Click [Here](#) to Reserve Your Course Place.